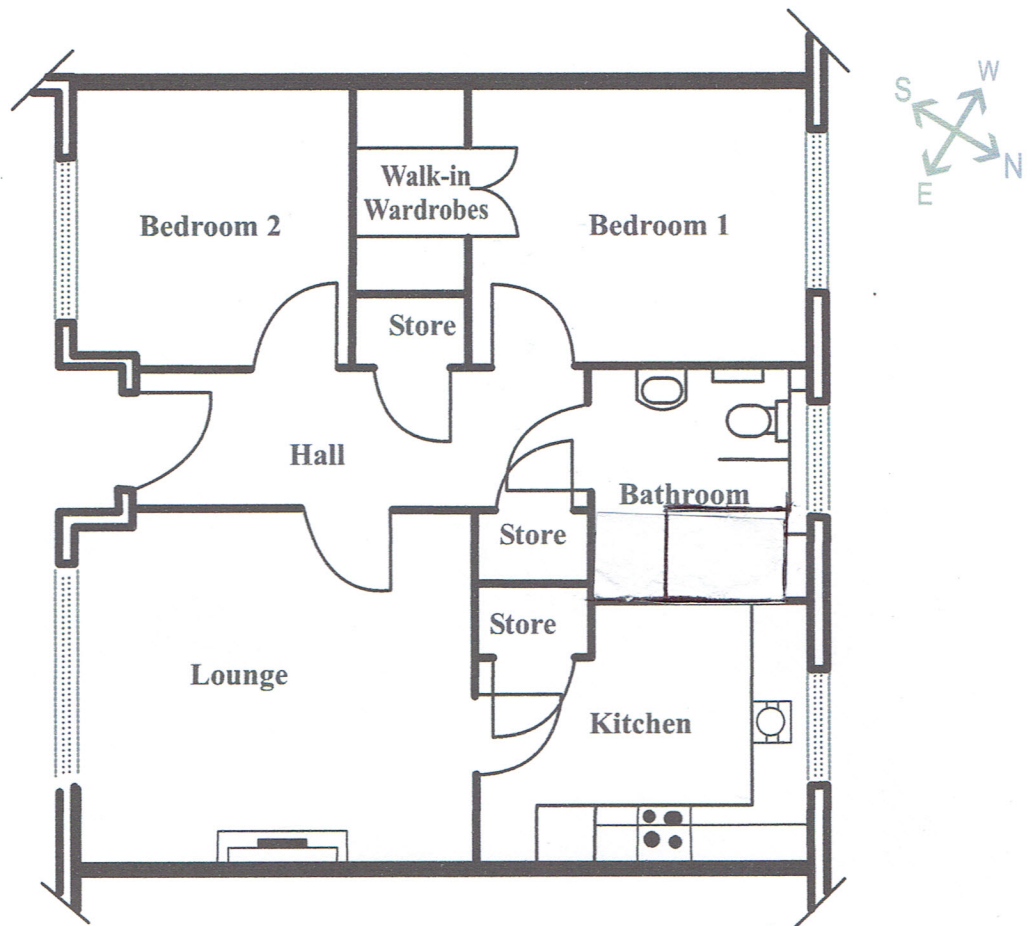


SYCAMORE COURT
Apartment 2 : Ground Floor



Room Dimensions

Lounge	4.325 x 3.725 (14'2" x 12'3")
Kitchen	3.525 x 2.725 (11'7" x 8'11")
Bedroom1	3.625 x 2.925 (11'11" x 9'7")
Walk in wardrobe	2.125 x 1.150 (7'0" x 3'9")
Bedroom2	2.925 x 2.925 (9'7" x 9'7")
Bathroom	2.450 x 2.325 (8'0" x 7'8")

****Floor plans and dimensions are approximate and are only intended as a guide.**